



PRIVATE DINING • MEETING ROOMS • EVENTS & RECEPTIONS



BRUNSWICK HOUSE

STEEPED IN GEORGIAN SPLENDOUR, A RELIC OF OLD LONDON

BRUNSWICK HOUSE

THE SALOON
THE SMOKING ROOM
THE PARLOUR/
THE LIBRARY
THE STUDY
THE CELLAR ROOMS
HIRE EXCLUSIVELY
OR BY THE FLOOR
TESTIMONIALS



Across the Thames from Belgravia and Tate Britain stands a mansion, a magnificent reminder of eighteenth century Vauxhall and its pleasure gardens. Where once orchestras played and pleasure steamers moored, a fifty storey tower stands – but inside Brunswick House the music can still be heard.

The House, once home to the eponymous Duke is now the LASSCO architectural emporium and the Brunswick House Restaurant.

Guests enter through the grand, Coadestone portico leaving the roar of twentieth century London behind. Inside its lofty Georgian interior the panelled rooms are packed with salvaged curiosities, magnificent chimneypieces, brilliant cut glass entranceways, sparkling chandeliers and noble colonnades.

Reclaimed furniture and vintage paraphernalia jostle with an eclectic display of fascinating antiques in each room. Outside Brunswick House, either on the roof terrace or the patio gardens and displayed in picturesque profusion are old street signs, statuary, fountains, lanterns and lamp posts. Everything is for sale!

Private dining, corporate meetings and receptions are held in the Saloon, the Cellar Rooms, Smoking Room, the Study, Parlour and the Paneled Library. Exclusive hire of the house can be arranged. Catering is provided in-house by the highly acclaimed chefs of the Brunswick House Restaurant.

LASSCO

BRUNSWICK HOUSE

STEEPED IN GEORGIAN SPLENDOUR, A RELIC OF OLD LONDON

BRUNSWICK HOUSE

THE SALOON
THE SMOKING ROOM
THE PARLOUR/
THE LIBRARY
THE STUDY
THE CELLAR ROOMS
HIRE EXCLUSIVELY
OR BY THE FLOOR
TESTIMONIALS

BRUNSWICK HOUSE OFFERINGS

Described by Nick Lander in the Financial Times as “one of the most memorable places to eat in London”. Brunswick House offers the best cuisine in a truly extraordinary setting.

In addition to nourishing breakfasts and exquisite canapés, feasting menus are available to banqueting guests.

Bespoke menus and packages are available on application, as well as suggested wine offers – corkage charges will apply should you wish to bring examples from your own cellars.

Food and drink minimum spends apply.
Please enquire for more details.

*“one of
the most
memorable
places to eat
in London”*

Nick Lander, Financial Times

LASSCO



BRUNSWICK HOUSE

STEEPED IN GEORGIAN SPLENDOUR, A RELIC OF OLD LONDON

BRUNSWICK HOUSE

THE SALOON

THE SMOKING ROOM

THE PARLOUR/
THE LIBRARY

THE STUDY

THE CELLAR ROOMS

HIRE EXCLUSIVELY
OR BY THE FLOOR

TESTIMONIALS

LASSCO



THE SALOON AND TERRACE

An impressively shabby room of five bays with access to an outdoor roof terrace with two good chimneypieces and open fires. The green velvet curtains and full height windows enhance the elegant tone of the room, which is furnished with the characteristically quirky stock of LASSCO. Once the drawing room of The Duke of Brunswick and later the snooker room of the LSWR Scientific & Literary Institute, The Saloon adjoins to The Smoking Room.

THE SALOON CAPACITY

The Saloon/Smoking Room can accommodate a maximum of 110 seated when hired with other floors.

The Saloon can accommodate 44 seated or 80 standing when hired alone. Venue hire fee £500 plus VAT.

The Saloon/Smoking Room can accommodate 70 seated or 120 standing when hired together. Venue hire fee £950 plus VAT.

TO FIND OUT MORE

Please get in touch with Jo Auger on **020 7501 7775** or email events@lassco.co.uk

BRUNSWICK HOUSE

STEEPED IN GEORGIAN SPLENDOUR, A RELIC OF OLD LONDON

BRUNSWICK HOUSE

THE SALOON

THE SMOKING ROOM

THE PARLOUR/
THE LIBRARY

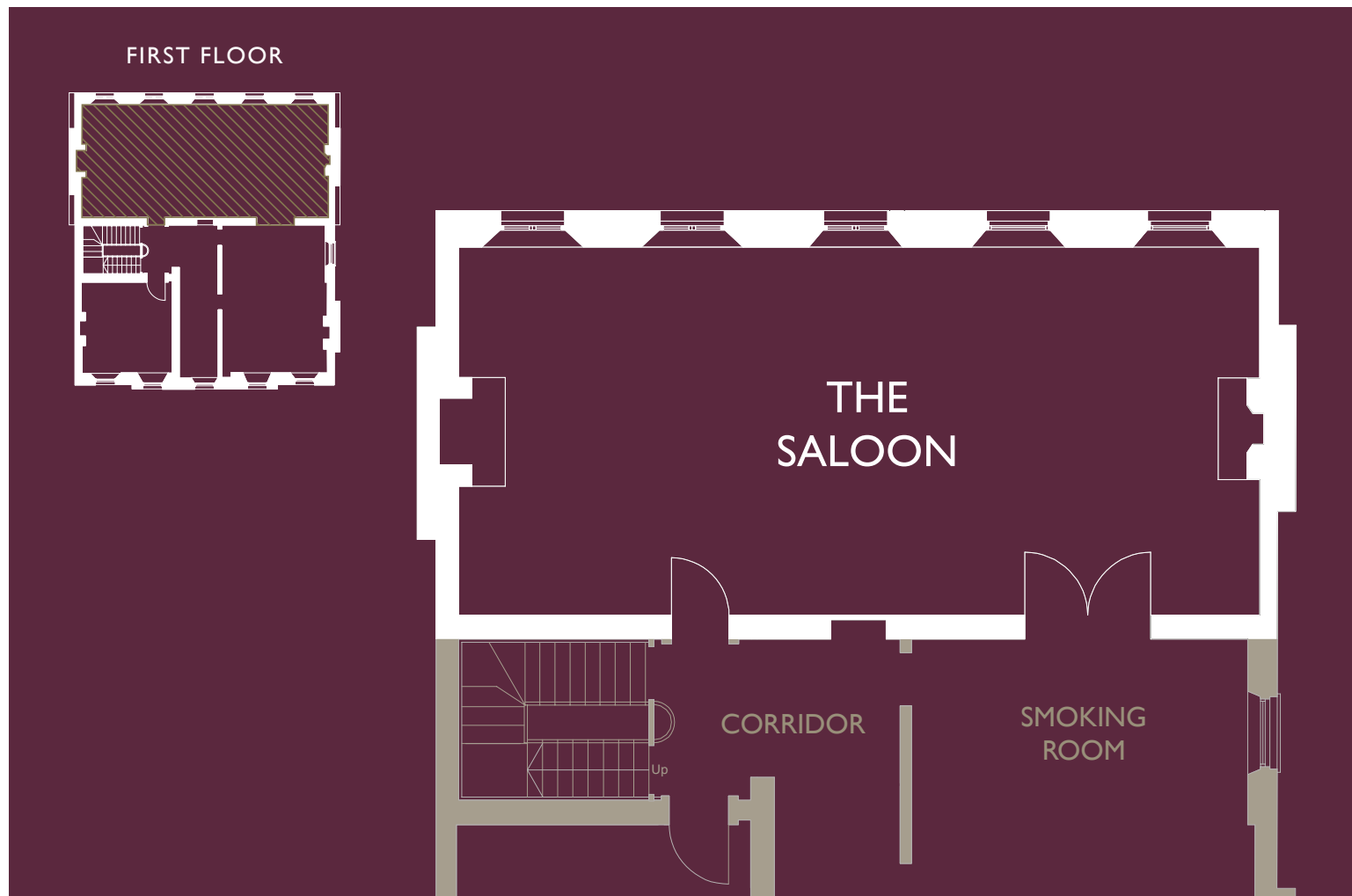
THE STUDY

THE CELLAR ROOMS

HIRE EXCLUSIVELY
OR BY THE FLOOR

TESTIMONIALS

LASSCO



0 1 5m
0 1 10ft

BRUNSWICK HOUSE

STEEPED IN GEORGIAN SPLENDOUR, A RELIC OF OLD LONDON

BRUNSWICK HOUSE

THE SALOON

THE SMOKING ROOM

THE PARLOUR/
THE LIBRARY

THE STUDY

THE CELLAR ROOMS

HIRE EXCLUSIVELY
OR BY THE FLOOR
TESTIMONIALS

LASSCO



THE SMOKING ROOM

A south facing first floor room of elegant proportions. With open fire, glittering chandeliers and original, old floorboards connected by magnificent mahogany doors to the adjacent Saloon, once The Smoking Room of the Railwayman's Club and now a welcoming venue.

THE SMOKING ROOM CAPACITY

70 standing/24 seated.
Venue hire fee £450 plus VAT.
The Saloon & adjoining Smoking Room can be hired together
120 standing/70 seated.
Venue hire fee £950 plus VAT.

TO FIND OUT MORE

Please get in touch with
Jo Auger on **020 7501 7775**
or email events@lassco.co.uk

BRUNSWICK HOUSE

STEEPED IN GEORGIAN SPLENDOUR, A RELIC OF OLD LONDON

BRUNSWICK HOUSE

THE SALOON

THE SMOKING ROOM

THE PARLOUR/
THE LIBRARY

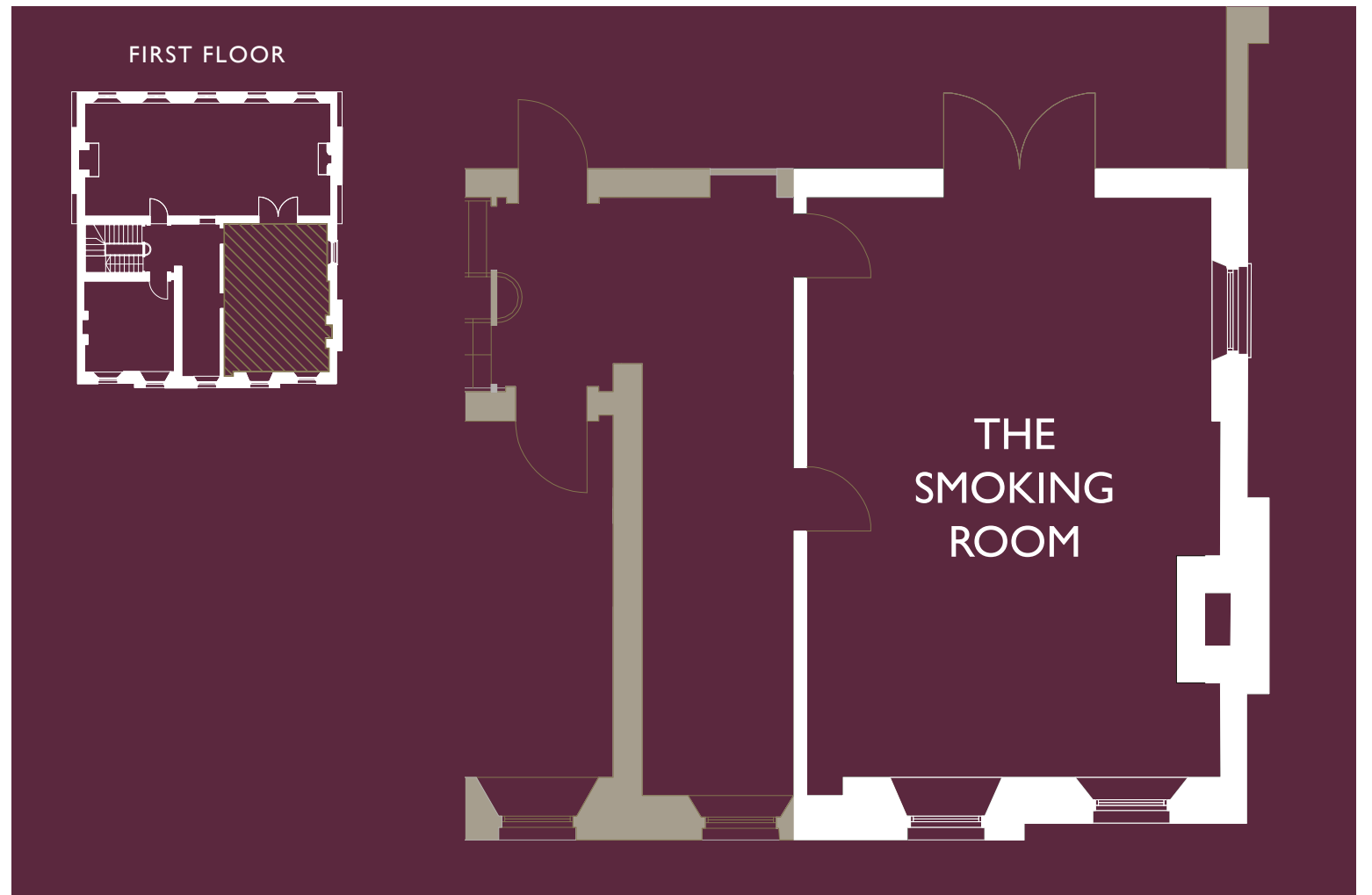
THE STUDY

THE CELLAR ROOMS

HIRE EXCLUSIVELY
OR BY THE FLOOR

TESTIMONIALS

LASSCO



0 1 5m
0 1 10ft

BRUNSWICK HOUSE

STEEPED IN GEORGIAN SPLENDOUR, A RELIC OF OLD LONDON

BRUNSWICK HOUSE

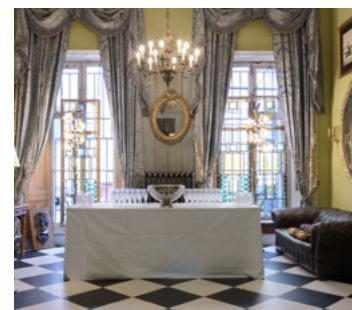
THE SALOON
THE SMOKING ROOM
**THE PARLOUR/
THE LIBRARY**
THE STUDY
THE CELLAR ROOMS
HIRE EXCLUSIVELY
OR BY THE FLOOR
TESTIMONIALS

LASSCO



THE PARLOUR/ LIBRARY ROOM

A light, lofty and dignified room with a playful continental character; tall windows and noble chimneypiece and furnished accordingly. A grand, salvaged doorcase accesses The Library, a fascinating room lined with tall cases full of books. A sparkling room abundant with hanging ceiling lights.



THE PARLOUR/LIBRARY ROOM CAPACITY

80 standing/38 seated in the Library or 17 seated in the Parlour
Venue hire fee £250 plus VAT

TO FIND OUT MORE

Please get in touch with
Jo Auger on **020 7501 7775**
or email events@lassco.co.uk

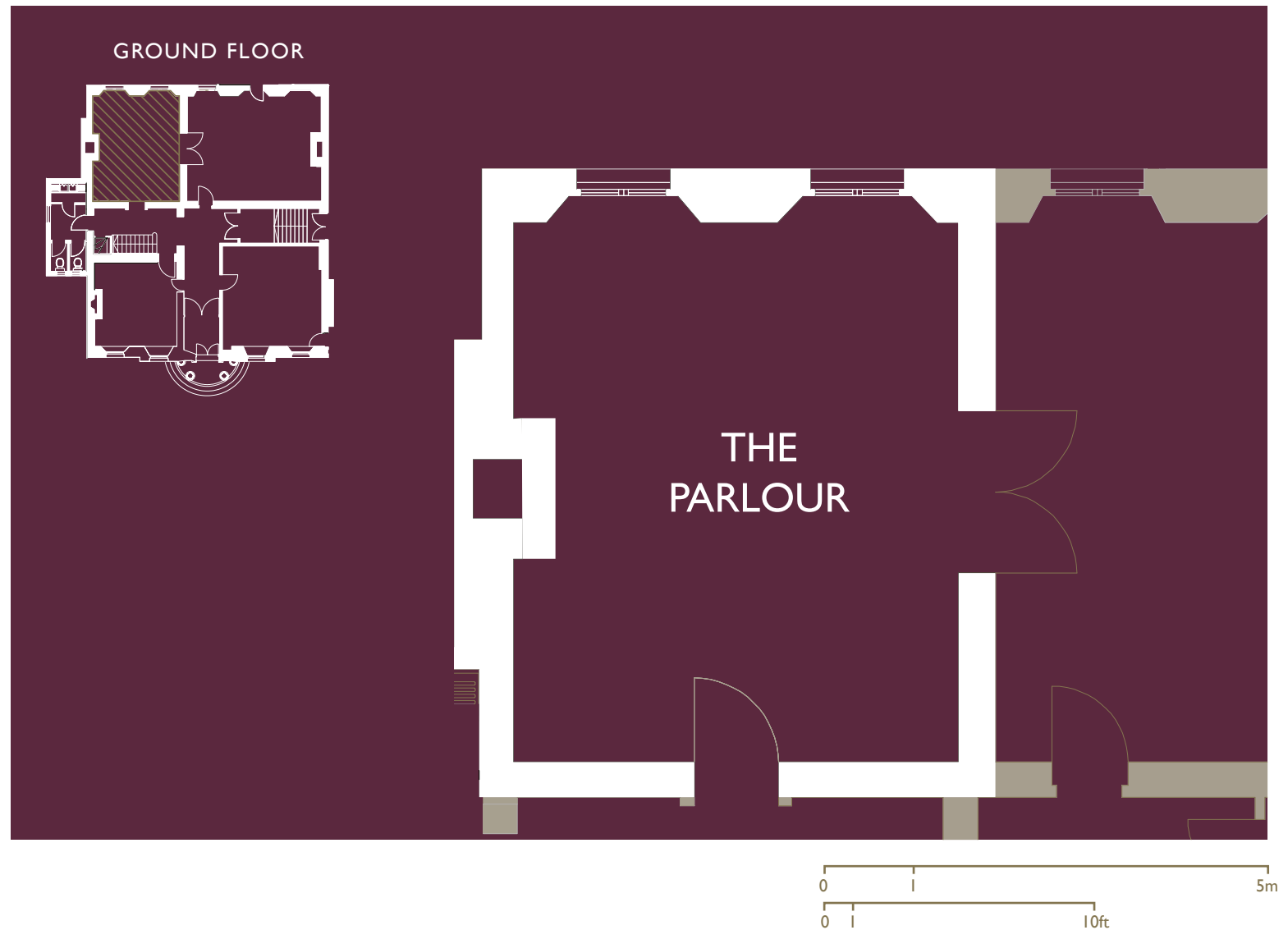
BRUNSWICK HOUSE

STEEPED IN GEORGIAN SPLENDOUR, A RELIC OF OLD LONDON

BRUNSWICK HOUSE

THE SALOON
THE SMOKING ROOM
**THE PARLOUR/
THE LIBRARY**
THE STUDY
THE CELLAR ROOMS
HIRE EXCLUSIVELY
OR BY THE FLOOR
TESTIMONIALS

LASSCO



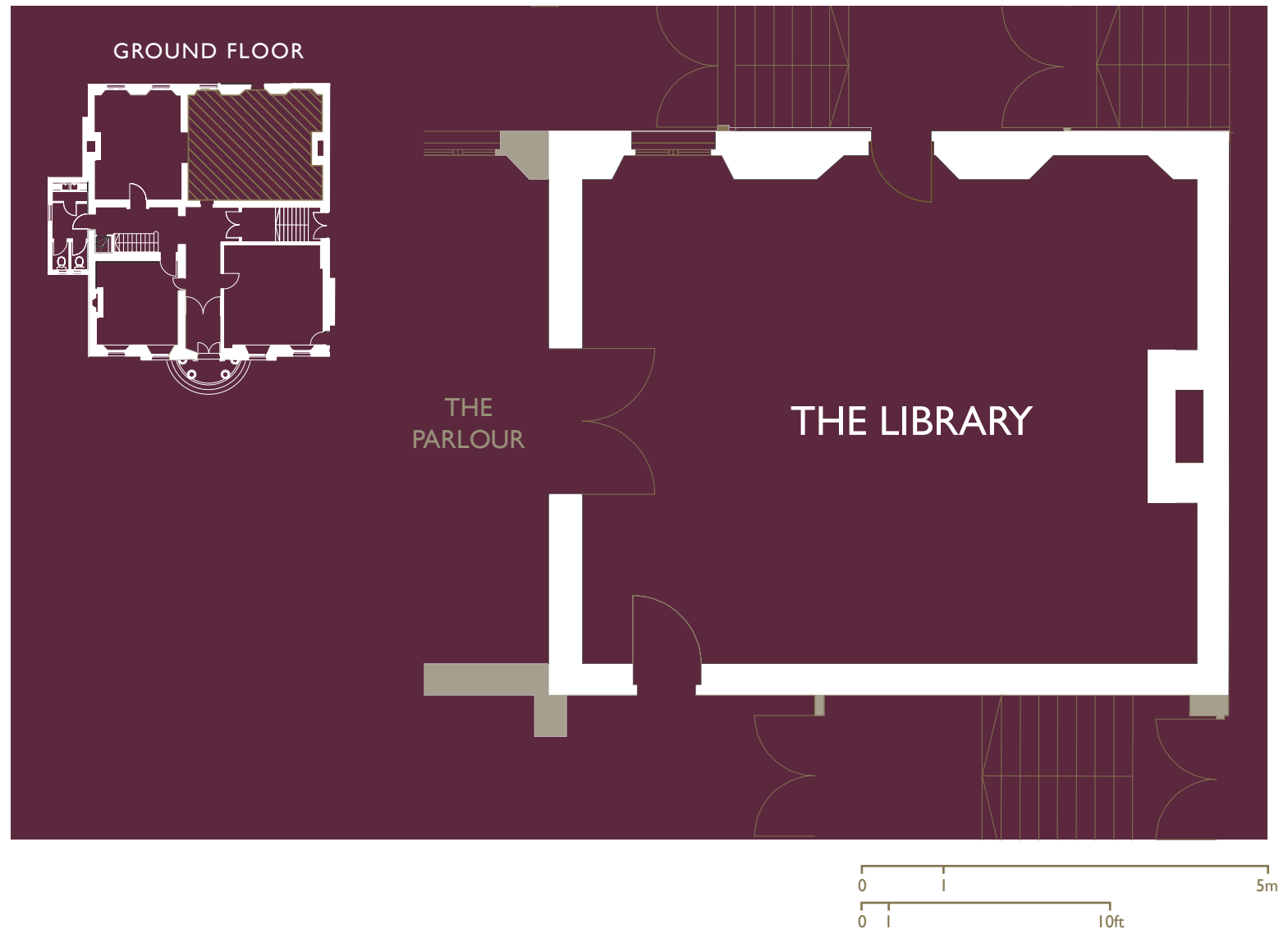
BRUNSWICK HOUSE

STEEPED IN GEORGIAN SPLENDOUR, A RELIC OF OLD LONDON

BRUNSWICK HOUSE

THE SALOON
THE SMOKING ROOM
**THE PARLOUR/
THE LIBRARY**
THE STUDY
THE CELLAR ROOMS
HIRE EXCLUSIVELY
OR BY THE FLOOR
TESTIMONIALS

LASSCO



BRUNSWICK HOUSE

STEEPED IN GEORGIAN SPLENDOUR, A RELIC OF OLD LONDON

BRUNSWICK HOUSE

THE SALOON
THE SMOKING ROOM
THE PARLOUR/
THE LIBRARY

THE STUDY

THE CELLAR ROOMS
HIRE EXCLUSIVELY
OR BY THE FLOOR
TESTIMONIALS

LASSCO



THE STUDY

A lofty mid eighteenth century panelled room adorned by a superb chandelier and a splendid fireplace. An intimate dining or meeting room furnished impeccably with period objects in authentic style.



THE STUDY CAPACITY

20 standing/ 10 seated.
Venue hire fee £250 plus VAT

TO FIND OUT MORE

Please get in touch with
Jo Auger on 020 7501 7775
or email events@lassco.co.uk

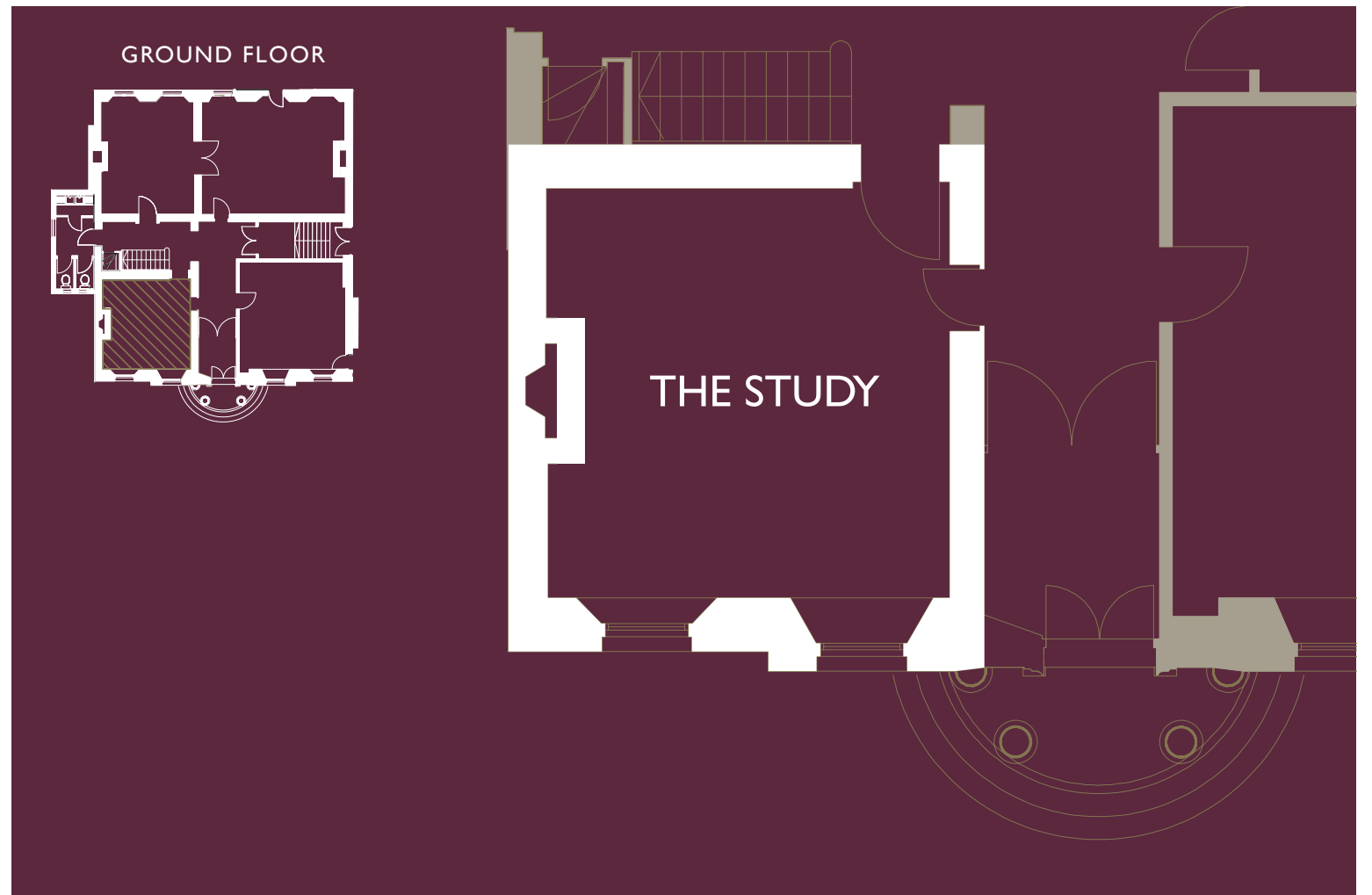
BRUNSWICK HOUSE

STEEPED IN GEORGIAN SPLENDOUR, A RELIC OF OLD LONDON

BRUNSWICK HOUSE

THE SALOON
THE SMOKING ROOM
THE PARLOUR/
THE LIBRARY
THE STUDY
THE CELLAR ROOMS
HIRE EXCLUSIVELY
OR BY THE FLOOR
TESTIMONIALS

LASSCO



BRUNSWICK HOUSE

STEEPED IN GEORGIAN SPLENDOUR, A RELIC OF OLD LONDON

BRUNSWICK HOUSE

THE SALOON
THE SMOKING ROOM
THE PARLOUR/
THE LIBRARY
THE STUDY

THE CELLAR ROOMS

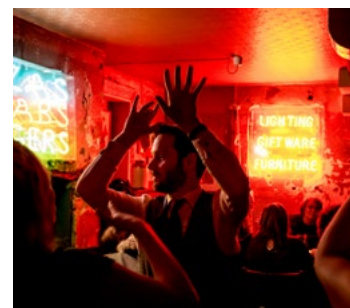
HIRE EXCLUSIVELY
OR BY THE FLOOR
TESTIMONIALS

LASSCO



THE CELLAR ROOMS

Below the Georgian mansion are a series of cellars, wine vaults, sculleries and pantries with large fireplaces, ancient flagstones and venerable brickwork, incorporating the remains of an earlier 17th Century building – intimate and hugely atmospheric and so unexpected. The hire of the Cellar Rooms includes the cellar bar, vaulted room and music room.



THE CELLAR CAPACITY

120 standing
Venue hire fee £750 plus VAT

TO FIND OUT MORE

Please get in touch with
Jo Auger on **020 7501 7775**
or email events@lassco.co.uk

BRUNSWICK HOUSE

STEEPED IN GEORGIAN SPLENDOUR, A RELIC OF OLD LONDON

BRUNSWICK HOUSE

THE SALOON
THE SMOKING ROOM
THE PARLOUR/
THE LIBRARY
THE STUDY
THE CELLAR ROOMS
**HIRE EXCLUSIVELY
OR BY THE FLOOR**
TESTIMONIALS



HIRE BRUNSWICK HOUSE EXCLUSIVELY OR BY THE FLOOR

EXCLUSIVE HIRE

Capacity 250 standing/110 seated
Venue hire fee £3750 plus VAT

GROUND FLOOR AND FIRST FLOOR

Capacity 180 standing/110 seated
Venue hire fee £2500 plus VAT

FIRST FLOOR AND CELLARS

Capacity 120 standing/70 seated
Venue hire fee £2500 plus VAT

GROUND FLOOR AND CELLARS

Capacity 180 standing/38 seated
Venue hire fee £1500 plus VAT



LASSCO

TO FIND OUT MORE

Please get in touch with
Jo Auger on **020 7501 7775**
or email events@lassco.co.uk

BRUNSWICK HOUSE

THE SALOON
THE SMOKING ROOM
THE PARLOUR/
THE LIBRARY
THE STUDY
THE CELLAR ROOMS
HIRE EXCLUSIVELY
OR BY THE FLOOR
TESTIMONIALS

LASSCO

BRUNSWICK HOUSE

STEEPED IN GEORGIAN SPLENDOUR, A RELIC OF OLD LONDON

TESTIMONIALS

"Just back from our honeymoon and taking a moment to write you all at Brunswick House a note to thank you for your help. Our reception was without a doubt perfect from all of our guest's perspectives, and most especially OURS! The rooms were beautifully arranged, the mood was just what we wanted, the food was praised all night long, the girls who helped us along with Jo all night were so lovely and friendly, the table set-up looked great, and we could go on and on... We were even cheered by the patrons of the bar downstairs before leaving. So funny! Thank you for making our day just the way we hoped it would be."

John (wedding reception)

"Thank you for an absolutely FANTASTIC evening on Saturday. Every single person was blown away by the food, the beautiful rooms, the overall atmosphere and the service! It could not have gone any better – it was perfect!"

Bruce and Lea (engagement party)

"I just wanted to say a huge thank you for everything last night. The party was a great success and EVERYONE commented on how fabulous the venue was. We have already had at least five requests to hold it there again next year so you'll be hearing from us again!"

Eve (book launch)

"Thank you for such a delightful, delightful evening at Brunswick House. There was such a palpable sense of occasion and fun, the food was world-class and the wine ever-flowing. The service and pace was friendly, convivial, and delightful in every way – I have rarely looked down a table to see so many people chatting away at such a rate

John (birthday party)

"Just wanted to say how helpful everyone was pre our Christmas party when I came up to lassco, it was a fantastic evening and everything about the place was great, so thank you and all the staff."

Giulia (Christmas party)

"Many thanks for a fantastic evening last night which was a great success. It was enjoyed by everyone. The food, wine, hospitality and atmosphere were all brilliant."

Andrew (birthday party)

"You all did us proud. The venue was amazing, the food was awesome and the service was seamless. Everyone had a brilliant time. We enjoyed ourselves too, so much so that we will be back!"

Angela & Patrick (birthday party)

"Just a quick note to thank you for your kind, efficient, intelligent and cordial help organising the birthday. The night itself was terrific. All guests were amazed and charmed. Sometimes you get the venue, sometimes you get the food, sometimes you get the staff, but it is very, very hard to get all three!"

Ed (birthday party)

BRUNSWICK HOUSE

STEEPED IN GEORGIAN SPLENDOUR, A RELIC OF OLD LONDON

BRUNSWICK HOUSE

THE SALOON
THE SMOKING ROOM
THE PARLOUR/
THE LIBRARY
THE STUDY
THE CELLAR ROOMS
HIRE EXCLUSIVELY
OR BY THE FLOOR
TESTIMONIALS

LASSCO



LOCATION

30 Wandsworth Road, Vauxhall,
London SW8 2LG, United Kingdom

Contact Jo Auger on **+44 (0)20 7501 7775**
or email **events@lassco.co.uk**

HOW TO GET HERE

LASSCO Brunswick House is in Central London next to Vauxhall Bridge – close to Westminster, the West End and routes to the South West.

By Cab: We're on the corner of Wandsworth Road and Nine Elms Lane, opposite the Vauxhall Bus Station. All "Black Cabs" should know us, get them to drop you in a safe spot – it is a busy junction.

By Road: Head for Vauxhall Bridge. The best approach is from Nine Elms Lane. Closest parking is at St George's Wharf underground car park.

By Tube: LASSCO Brunswick House is a two-minute walk from Vauxhall Tube Station. Vauxhall is just minutes from all central London tube stops on the Victoria Line. It is in Zone 1. On arrival, follow signs to Exit 6. LASSCO Brunswick House is straight on from the exit on your right.

By Riverboat: From the Tate Britain riverboat pier walk south to Vauxhall Bridge, cross the river and follow the pavement leaving the St. George Wharf development to your right. Brunswick House is on the right.

By foot: The Thames path runs past the front door of Brunswick House and we are on the Central London cycle routes.